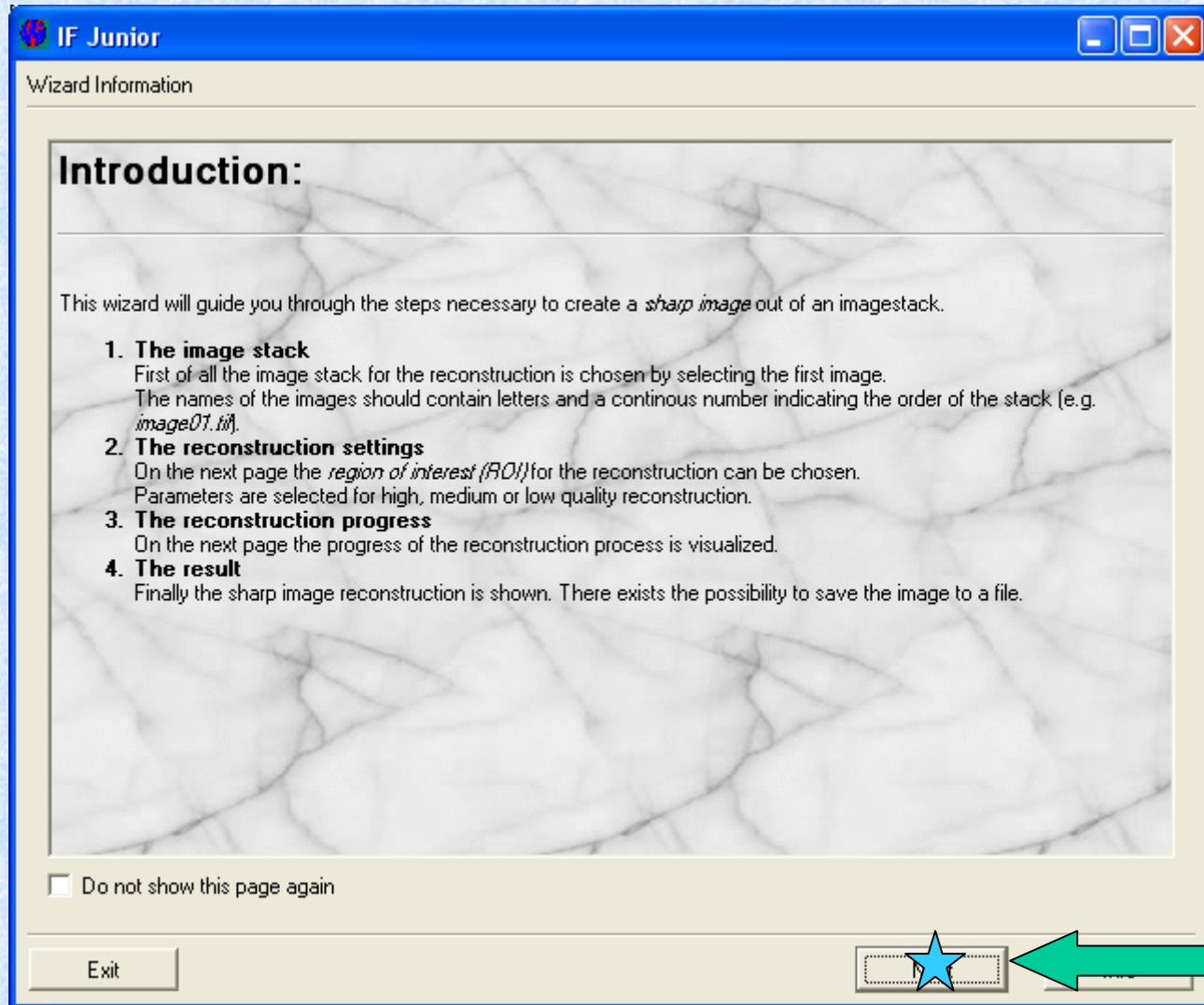
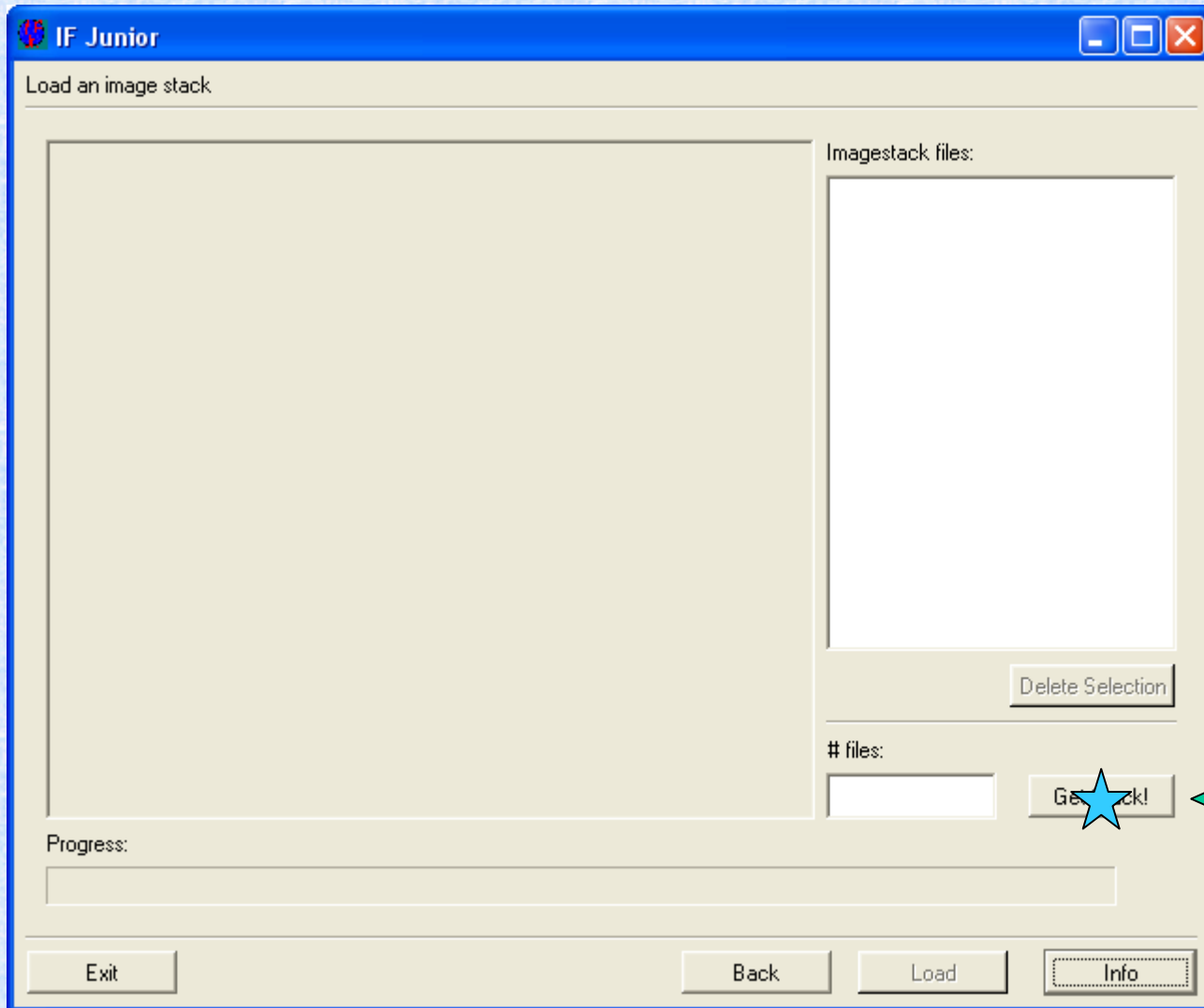


# Introduction

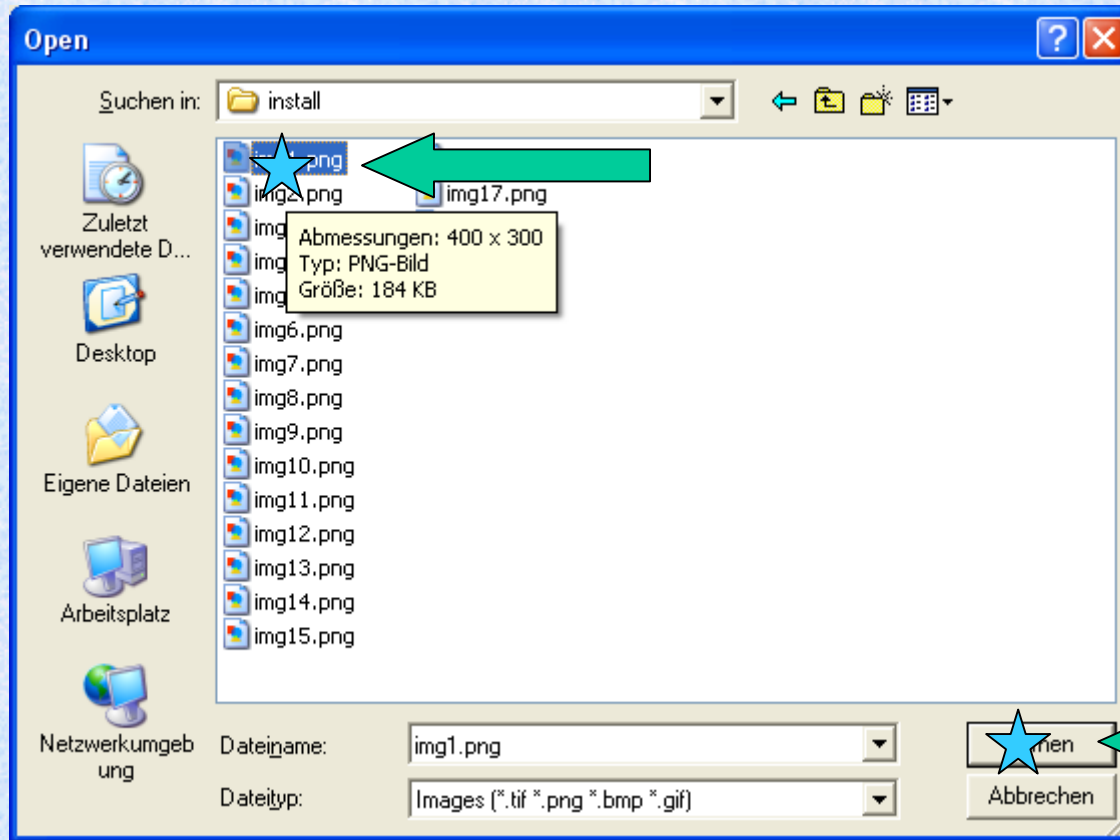


# Load Imagestack I

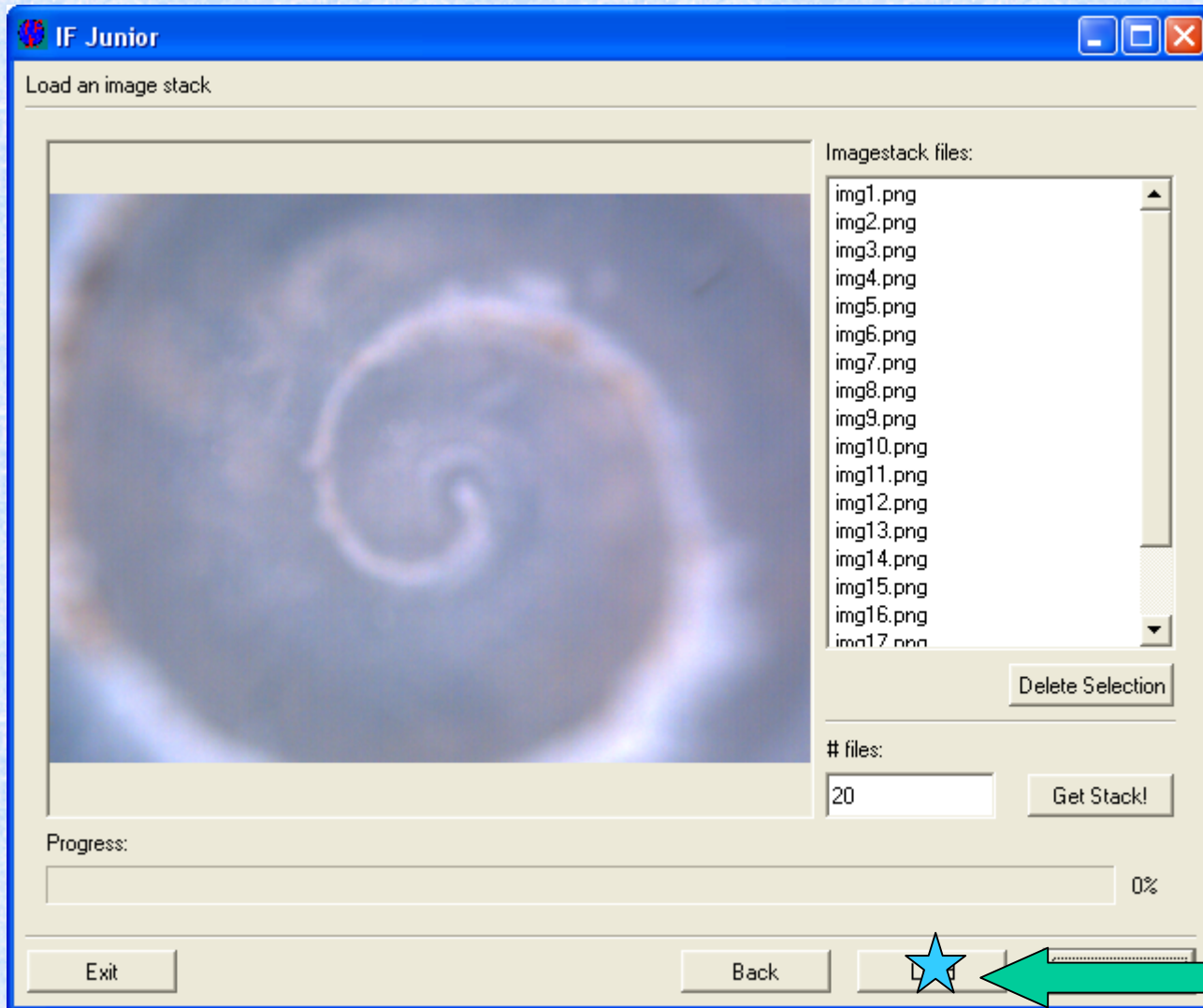


# Load Imagestack II

Select first file of the image stack

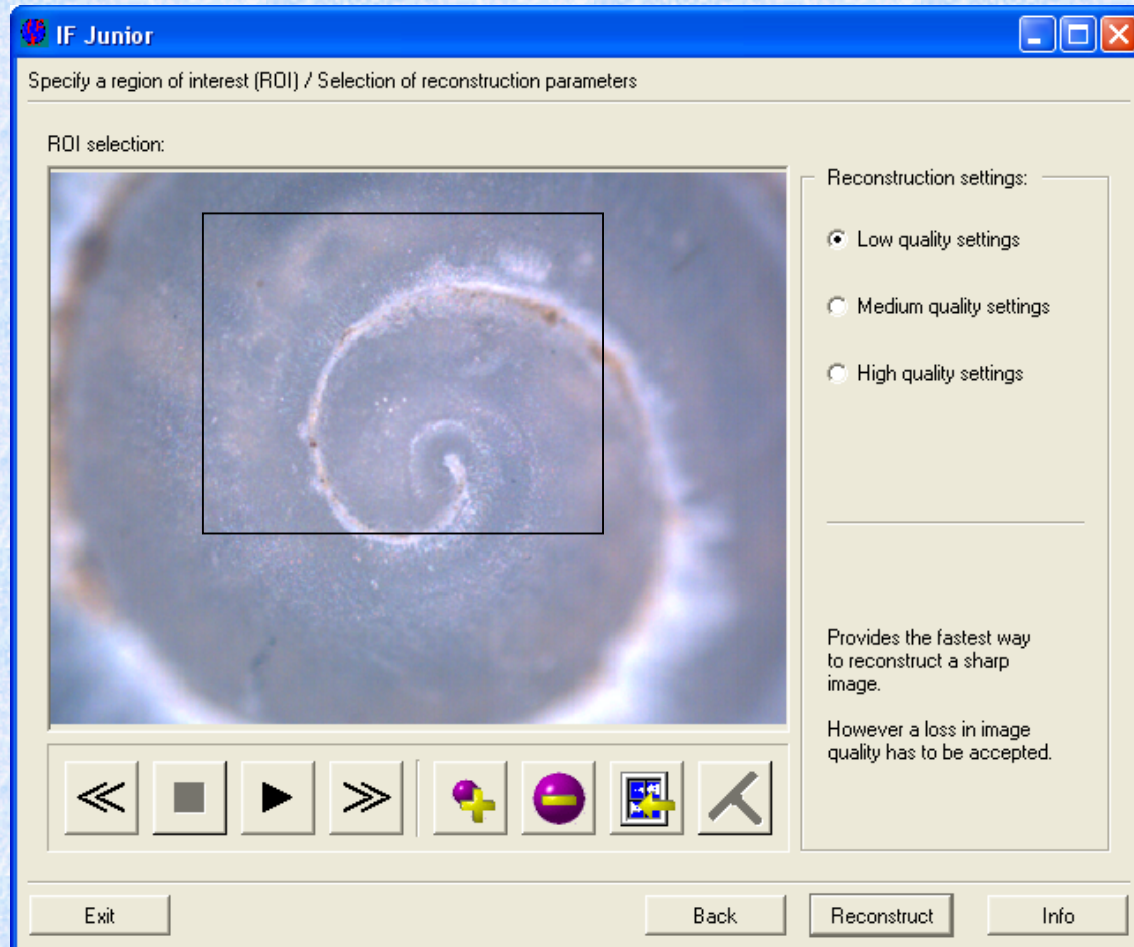


# Load Imagestack III



# Set Region of Interest

With the mouse click into the preview window and draw a rectangle.

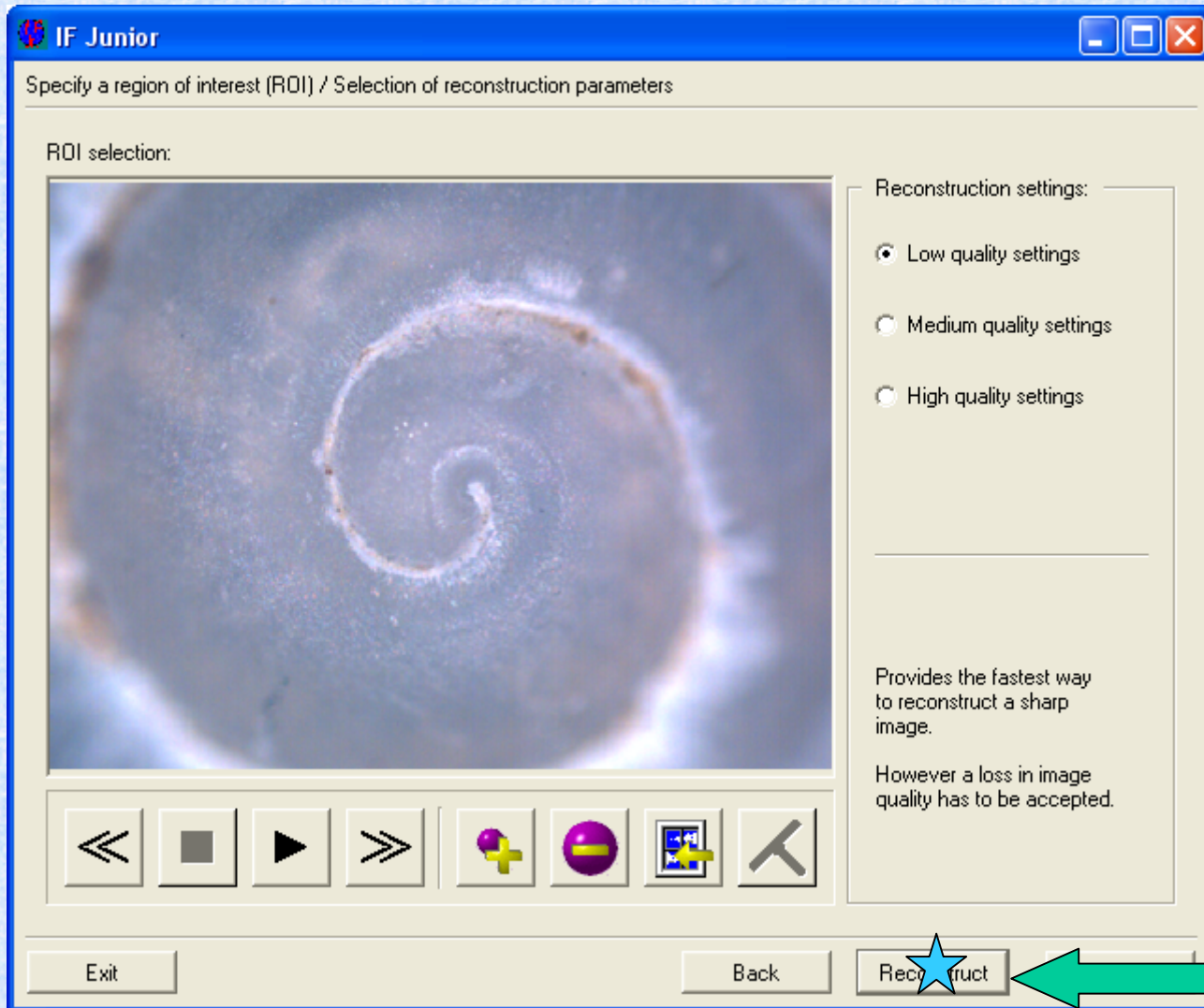


# Set Reconstruction Parameters

Choose the parameters for preview, normal or high quality.



# Start Reconstruction



# Reconstruction Progress


IF Junior

Reconstruction progress


## Information:

The application is now processing the image stack to reconstruct a sharp image. There are certain steps:


- 1. Preprocessing**  
Cutting out the region of interest and performing certain precalculations.
- 2. Calculating the depth values**
- 3. Correction**  
For the robustness of the algorithm it is necessary to eliminate outliers, etc.
- 4. Calculate the sharp image**  
Taking the depth values it is now possible to create a sharp image



Progress Information

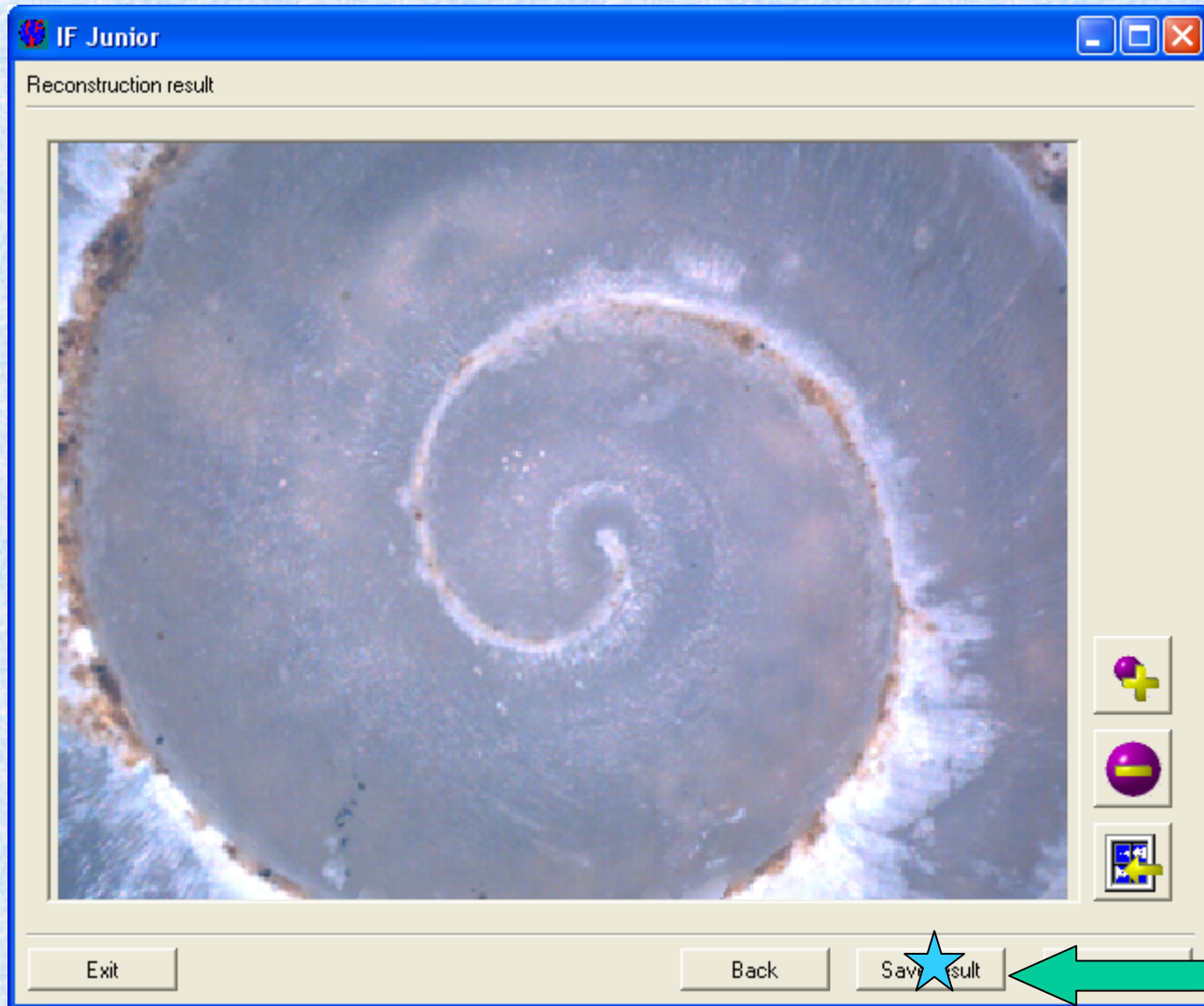
**Calculate sharp image** 

**Post Processing Phase**

 99%

Cancel Info

# Save Result I



# Save Result II

Enter the filename of the result image.

