

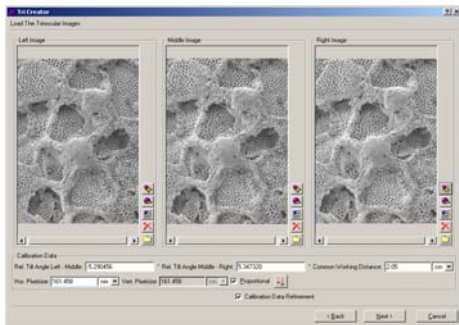


This Application Report is presented by CANIMPEX and



Topomicroscopy – We bring topography to microscopy

TriCreator – 3D model from three images

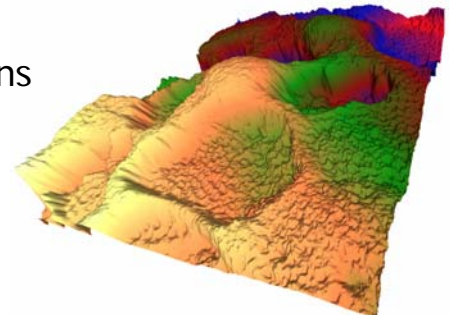


The new module TriCreator generates a 3D model from three different tilted SEM images. Up to now the reconstruction was done with two images by the StereoCreator.

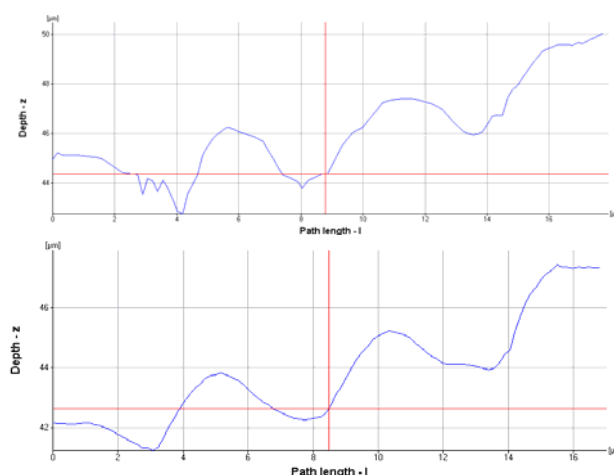
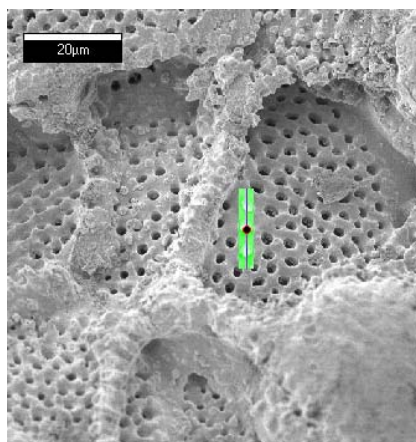
Even though hereby three images are necessary, the whole procedure is eased as less effort is needed for the calibration read-out. Latest developments in image processing allow to refine the tilt angle with an accuracy up to 0.01 degree. This leads to significantly more accurate and more dense reconstructions.

„We make the invisible visible“

- Use of 3 images substantially enhances reconstructions
- Quantitative profile, area, and volumetric calculations
- Automated determination of calibration data



Sample Screenshots



StereoCreator

TriCreator