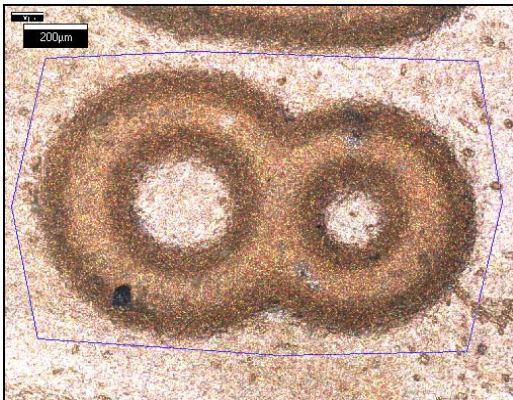
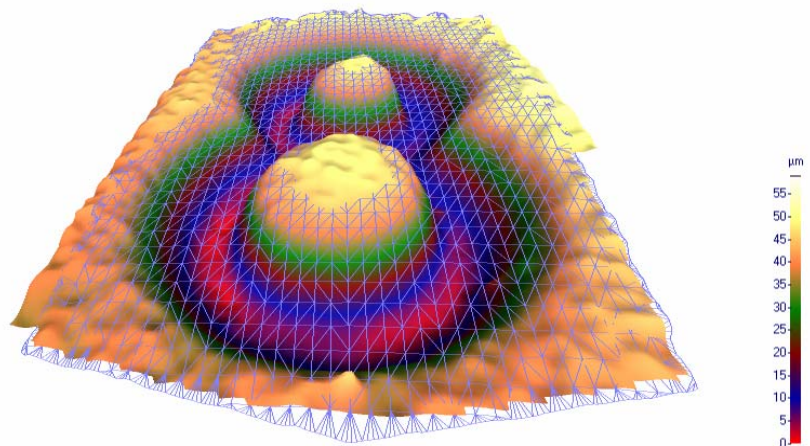


**Topomicroscopy – We bring topography to microscopy****Volume measurement of a chisels**

Change of the surface elevations (in this example that of a stamped surface) may fall below a certain volume. The volume analysis capability of the InfiniteFocus software is very useful. From the 3D reconstructed image, the user is able to extract a region of interest (represented by the blue line) for subsequent volume analysis. The results shown below illustrate one of several methods to portray volumetric computations. This method of analysis is essential in a variety of quality assurance investigations.

The Alicona software is able to provide the user with a wide variety of display formats to assist in volumetric computations. Shown at right is the depth anaglyph with a user-controllable intercepting cutting plane from which the volume analysis is indicated. The depth anaglyph is also useful for selecting discrete points to re-establish the reference plane from that which was assigned during the initial capture sequence.



Volume Analysis

Above Surface: 169626  $\mu\text{m}^3$   
 Below Surface: 24616300  $\mu\text{m}^3$   
 Projected Area: 1.34484  $\text{mm}^2$