

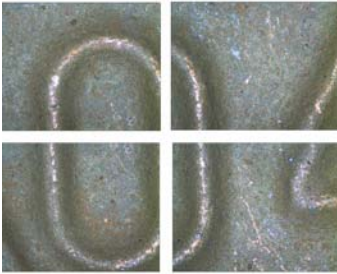
This Application Report is presented by CANIMPEX Ltd and

**INFINITEFOCUS**®

**alicon**a  
imaging

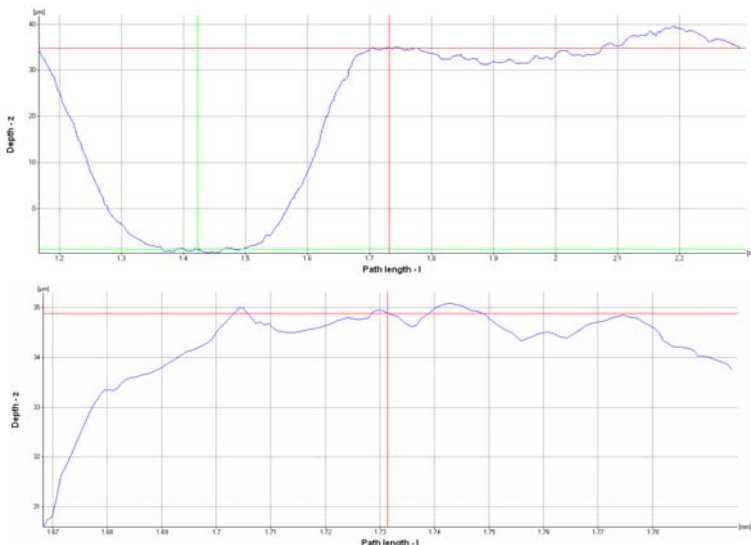
## Topomicroscopy – We bring topography to microscopy

## Imagefield - Stitching Contiguous Fields of View



The Imagefield Module of the Alicona InfiniteFocus Microscope is employed to maintain the resolution found at higher magnifications, yet still be able to cover larger areas of the specimen surface. The software utilizes its motorized X/Y/Z stage and an easy-to-use graphical user interface to produce seamless renderings of overlapping fields of view.

### Screenshots



The Imagefield module permits an increase of the vertical resolution by utilizing higher N.A. objectives on the IFM nosepiece. The resulting 3D-Model (shown above) is automatically generated by simply selecting the upper and diagonally-opposing lower corners of the sample surface.

The resulting 3D-Model saves the entire data set, which has the advantage of increasing the actual precision of any subsequent analysis for profile, area, or volume within the software.

Distribution and Service - CANIMPEX Ltd. - [www.canimpex.ns.ca](http://www.canimpex.ns.ca) - 1.902.457-0975 [www.alicon.com](http://www.alicon.com)

Alicona Imaging • [info@alicon.com](mailto:info@alicon.com) • Teslastraße 8 • A – 8074 Grambach, Austria • t +43 (316) 4000 700 • Fax +43 (316) 4000 711