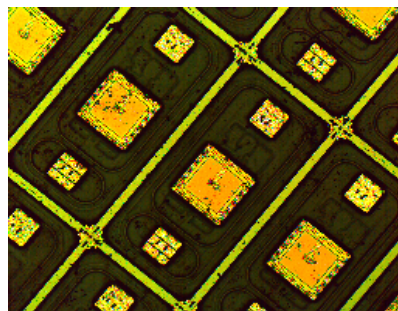


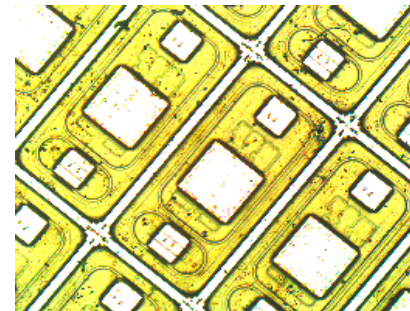
Topomicroscopy – We bring topography to microscopy

Automatic illumination due to high-radiometric function

Alicona's High Radiometric Function is able to control sensor settings, select optimally-illuminated fields, and combine them into a single perfectly-illuminated image.

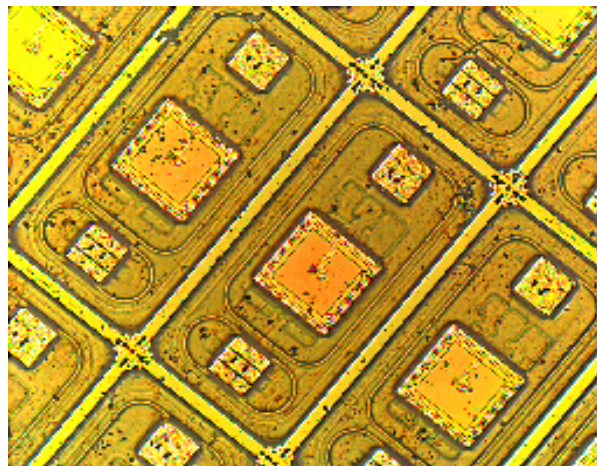


Low Exposure



High Exposure

Common Problems of Sensor Technology are solved



High-Radiometric Image

With the high-radiometric process, image brightness and contrast are set according to the optimal exposure levels for each individual pixel throughout each focal plane. This enables the most precise dynamic range of the composite image. Image quality and the amount of information a radiometric image contains are thus optimized on a pixel-by-pixel basis.

The high dynamic software process makes use of all internal camera calculations, as well as for white balance and the automatic gain display. This high level integration during acquisition offers Alicona's greatest advantage: that image quality is not dependent on discrete lighting conditions as is the case with less automated capture systems.